

NUMERHYD

MULTI-STATION MANIFOLD CETOP 3

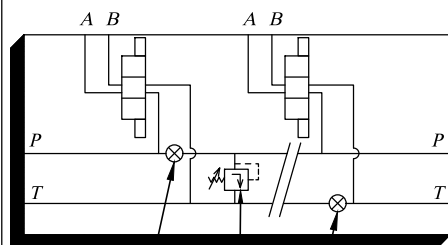
S3L

A21/2

SIDE EXIT

- Sorties latérales
- Seitlich

- Service pressure 700bar for steel - 300bar for aluminium alloy.
- Possibility to connect with a special manifold.
- Possibility to connect with several block S3 or S5.

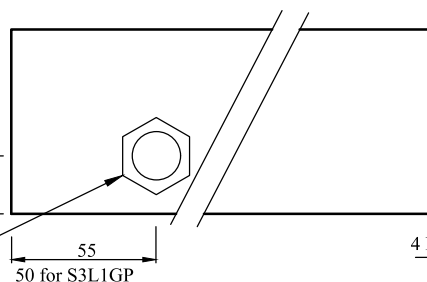
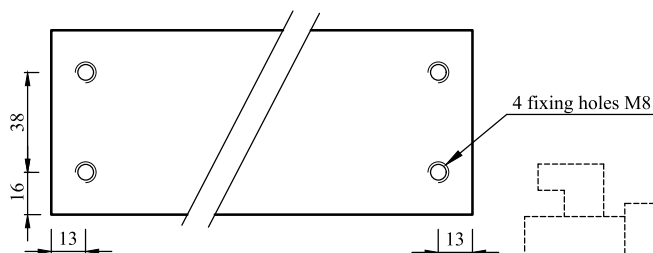
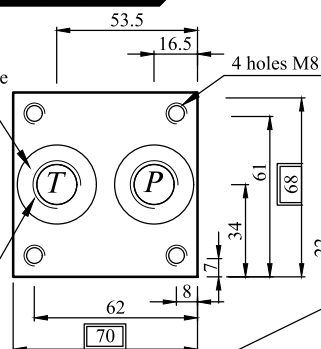


Cavity C10.2 optional

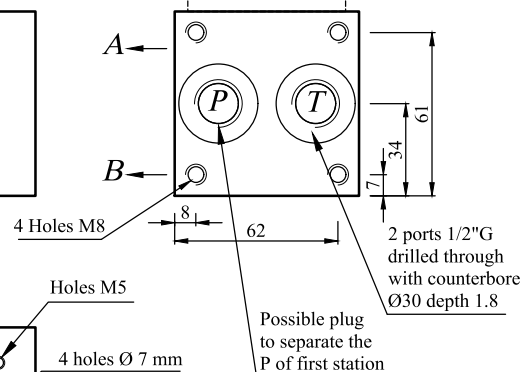
Tapped hole 3/8"G for possible plug (plug out of supply)

2 port 1/2"G drilled through with counterbore Ø30 depth 1.8

Possible plug to separate the T of first station



4 fixing holes M8

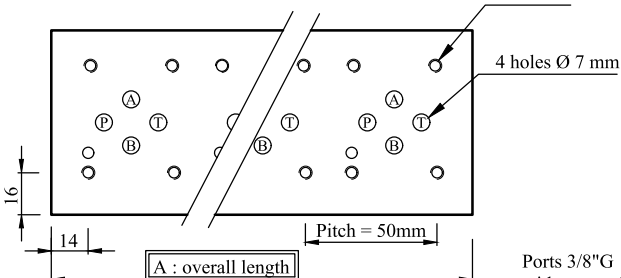
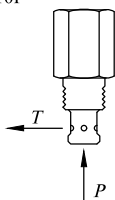


Possible plug to separate the P of first station

* OPTIONAL CAVITY FOR VALVE C10.2 COMPONENT FOR EXAMPLE : (OUT OF SUPPLY)

* HYDRAFORCE VC10.2 RV10-20/RV10-26
* EATON C10.2 RV2-10/RV5-10
* PARKER C10.2 RD102
* HYDAC FC10-2 DB10P
ETC...

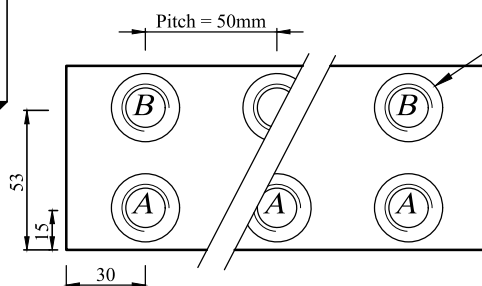
* AND ALSO :
DIRECTIONAL VALVE
RESTRICTOR
CHECK VALVE



Holes M5

4 holes Ø 7 mm

Ports 3/8"G with counterbore Ø 26 depth 1



DIMENSIONS

MODEL	A	weight (kg)	
		STEEL	ALU
S3L1G-	60	1.7	0.6
S3L1GP-	80	2.3	0.8
S3L2G-	110	3.3	1.2
S3L3G-	160	5.0	1.8
S3L4G-	210	6.6	2.3
S3L5G-	260	8.2	2.9
S3L6G	310	9.7	3.5
S3L7G-	360	11.3	4.0
S3L8G-	410	13.0	4.6

MODEL CODE

S 3 L ? G ? ?

STANDARD
MANIFOLD

SIZE
CETOP 3

SIDE
EXIT

NUMBER OF
STATIONS
1,2,3,4,5,6,7,8

TYPE OF PORT
B.S.P.P.

- : NO CAVITY
P : CAVITY C10.2

MATERIALS
S: STEEL
A: ALU. 2017A