

Preparation of compressed air ► Supplementary products

Filling valve, pneumatically operated, Series NL4-SSV

► G 1/2 ► pipe connection



00106024

Version	Poppet valve, Can be assembled into blocks
Working pressure min./max.	0 bar / 16 bar
Medium	Compressed air
	Neutral gases
Medium temperature min./max.	-10 °C / +60 °C
Ambient temperature min./max.	-10 °C / +60 °C
Sealing principle	Soft sealing
Control pressure min./max.	2.5 bar / 16 bar
Max. particle size	5 µm
Materials:	
Housing	Die cast zinc
Front plate	Acrylonitrile butadiene styrene
Seals	Acrylonitrile Butadiene Rubber
Threaded bushing	Die cast zinc

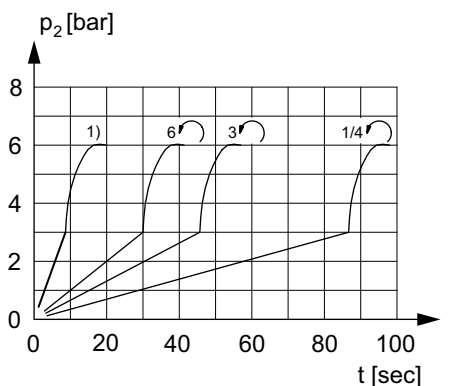
Technical Remarks

- The pressure dew point must be at least 15 °C under ambient and medium temperature and may not exceed 3 °C.
- Builds up pressure slowly in the pneumatic systems, i.e. prevents a sudden pressure build-up during a restart after a mains pressure failure or avoids emergency OFF switching. This also avoids dangerous, jerky cylinder movements.

	Port	Qn [l/min]	Weight [kg]	Note	Part No.
	G 1/2	4000	0.76	1)	0821300936
	G 1/2	4000	0.685	2)	0821300935

1) adjustable filling
2) Filling with fixed diaphragm
Nominal flow Qn with secondary pressure 6 bar at $\Delta p = 1$ bar

Secondary pressure while filling



00107183

adjustable filling
p2 = secondary pressure
t = fill time

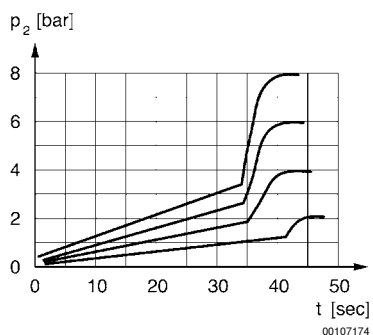
Supplementary products

Part numbers marked in bold are available from the central warehouse in Germany, see the shopping basket for more detailed information

Pneumatics catalog, online PDF, as of 2015-03-03, ©AVENTICS S.a.r.l., subject to change

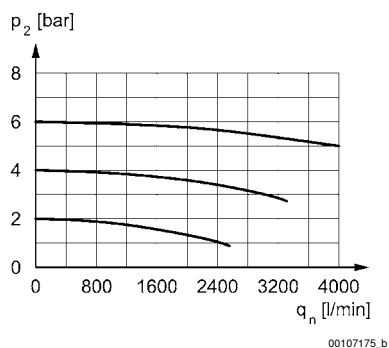
Filling valve, pneumatically operated, Series NL4-SSV

► G 1/2 ► pipe connection



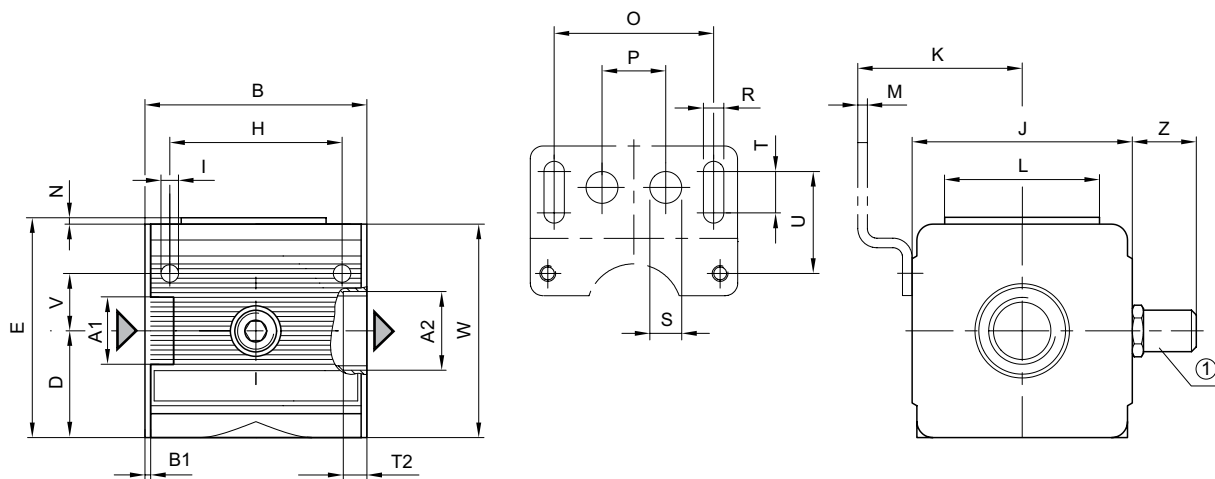
Filling with fixed diaphragm
 p_2 = secondary pressure
 t = fill time

Flow rate characteristic



p_2 = secondary pressure
 q_n = nominal flow

Dimensions



1) Adjustment screw for filling time
 A_1 = input
 A_2 = output

00106029

Preparation of compressed air ► Supplementary products
Filling valve, pneumatically operated, Series NL4-SSV

► G 1/2 ► pipe connection

Part No.	A1	A2	B	B1	D	E	H	I	J	K	L	M
0821300936	G 1/2	G 1/2	69.6	1.8	36.5	73	54	5.4	69	54.5	48	3
0821300935	G 1/2	G 1/2	69.6	1.8	36.5	73	54	5.4	69	54.5	48	3

Part No.	N	O	P	R	S	T	T2	U	V	W	Z
0821300936	3	50	20	6.4	10	13	13	33	18	67	20
0821300935	3	50	20	6.4	10	13	13	33	18	67	–