

Preparation of compressed air ► Maintenance units and components

3/2-directional valve, electrically operated, Series AS1-SOV

► G 1/4 ► Air supply: left ► pipe connection ► ATEX optional



00137241_a

Version	Poppet valve, Can be assembled into blocks
Nominal flow, 1►2	2000 l/min
Nominal flow, 2►3	380 l/min
Working pressure min./max.	2 bar / 10 bar
Medium	Compressed air Neutral gases
Medium temperature min./max.	-10 °C / +50 °C
Ambient temperature min./max.	-10 °C / +50 °C
Pilot	internal
Sealing principle	Soft sealing
Max. particle size	25 µm
Oil content of compressed air	0 mg/m³ - 5 mg/m³
Degree of protection, with Plug Mounted	IP65
Materials:	
Housing	Polyamide
Front plate	Acrylonitrile butadiene styrene
Seals	Acrylonitrile Butadiene Rubber

Technical Remarks

- The pressure dew point must be at least 15 °C under ambient and medium temperature and may not exceed 3 °C.
- ATEX optional: The ATEX ID depends on the selected pilot valve.

Operational voltage			Power consumption	Switch-on power		Holding power
DC	AC 50 Hz	AC 60 Hz	DC	AC 50 Hz	AC 60 Hz	AC 50 Hz
			W	VA	VA	VA
24 V	-	-	2	-	-	-
-	230 V	230 V	-	3	3	1.6

		Port	Exhaust	Operational voltage			Electr. connection	Weight	Fig.	Note	Part No.
				DC	AC 50 Hz	AC 60 Hz					
								[kg]			
	-	G 1/4	G 1/4	-	-	-	-	0.1964	Fig. 1	1); 4)	R412014669
								0.2096		2); 4)	R412014670
		G 1/4	G 1/4	24 V	-	-	Plug, ISO 15217, form C	0.2154	Fig. 2	3)	R412014666
				-	230 V	230 V	Plug, ISO 15217, form C	0.2143	Fig. 2		R412014668
				24 V	-	-	Plug, M12	0.2321	Fig. 3		R412010680

- 1) Basic valve without pilot valve
2) Basic valve without pilot valve, with CNOMO subbase
3) Basic valve with pilot valve
4) ATEX optional
Nominal flow Q_n at p₁ = 6.3 bar and Δp = 1 bar

3/2-directional valve, electrically operated, Series AS1-SOV

► G 1/4 ► Air supply: left ► pipe connection ► ATEX optional

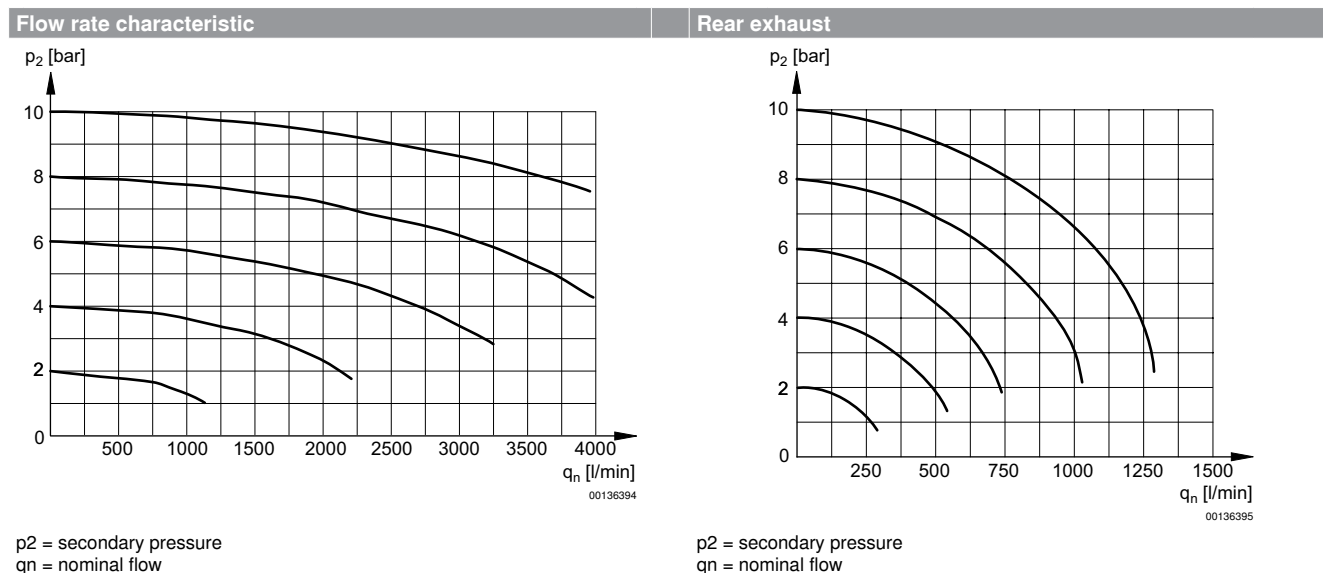
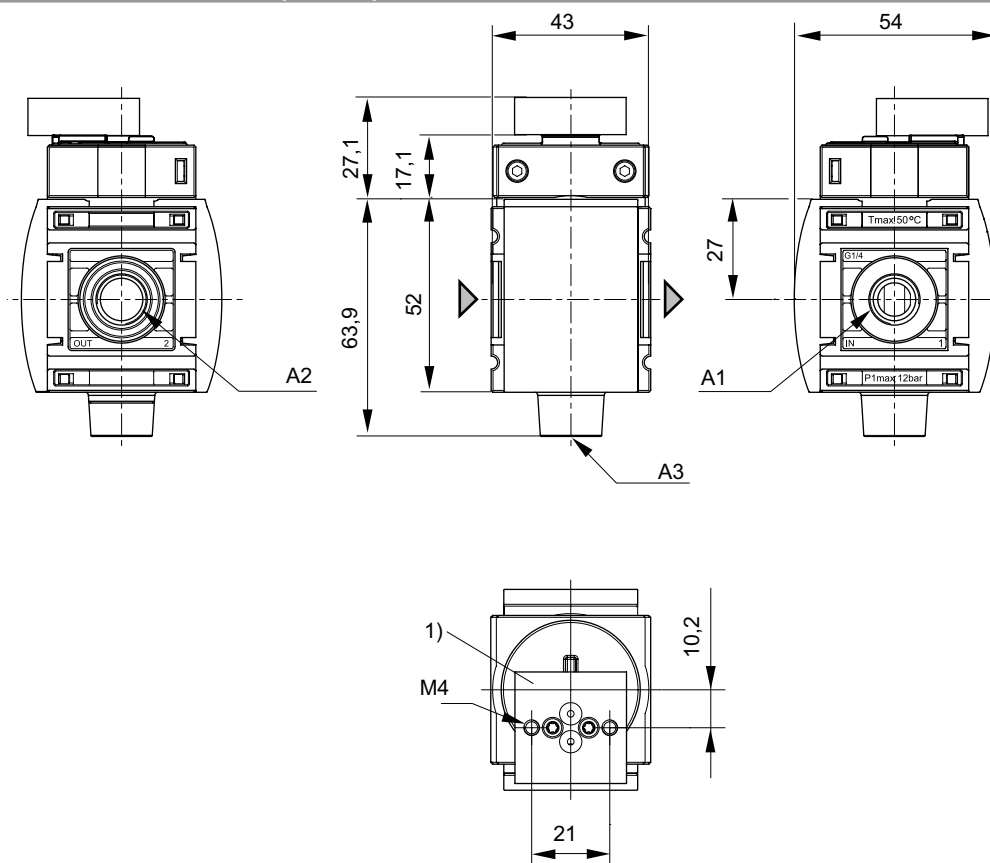


Fig. 1: 3/2-directional valve with transition plate for pilot valve series DO30



A1 = input
A2 = output
A3 = ventilation port
1) Transition plate with CNOMO porting configuration for pilot valve DO30

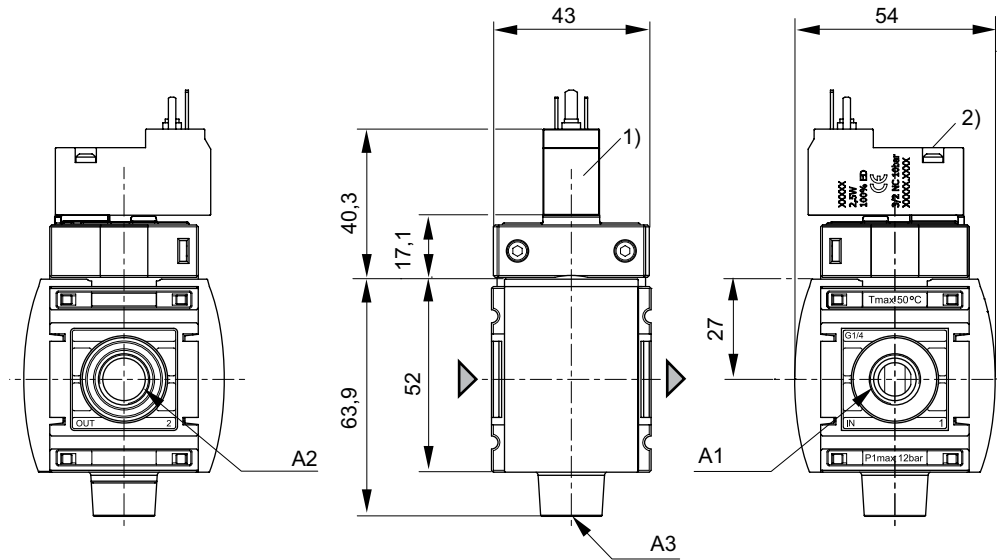
00132008

Preparation of compressed air ► Maintenance units and components

3/2-directional valve, electrically operated, Series AS1-SOV

► G 1/4 ► Air supply: left ► pipe connection ► ATEX optional

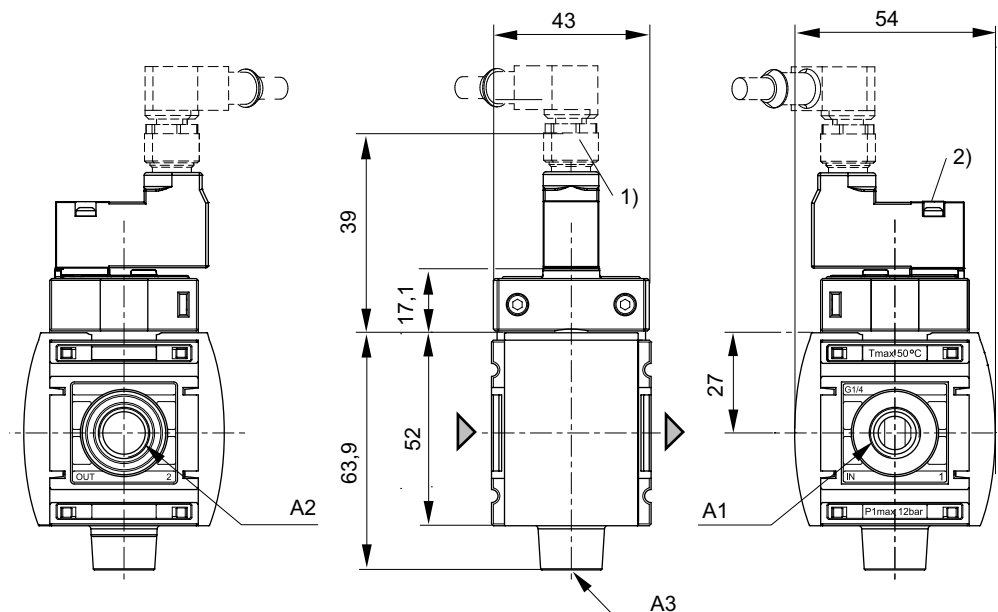
Fig. 2: 3/2-directional valve with pilot valve and port for electrical connector form C



00132005

- A1 = input
- A2 = output
- A3 = ventilation port
- 1) For electrical connector according to ISO 15217 (form C)
- 2) Manual override

Fig. 3: 3/2-directional valve with pilot valve, push-in fitting M12x1



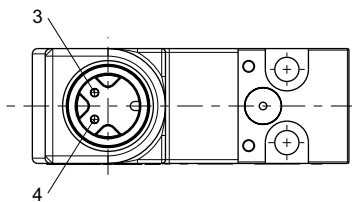
20439

- A1 = input
- A2 = output
- A3 = ventilation port
- 1) plug M12
- 2) Manual override

3/2-directional valve, electrically operated, Series AS1-SOV

► G 1/4 ► Air supply: left ► pipe connection ► ATEX optional

Pin assignment M12x1



20438

3: +/-

4: +/-